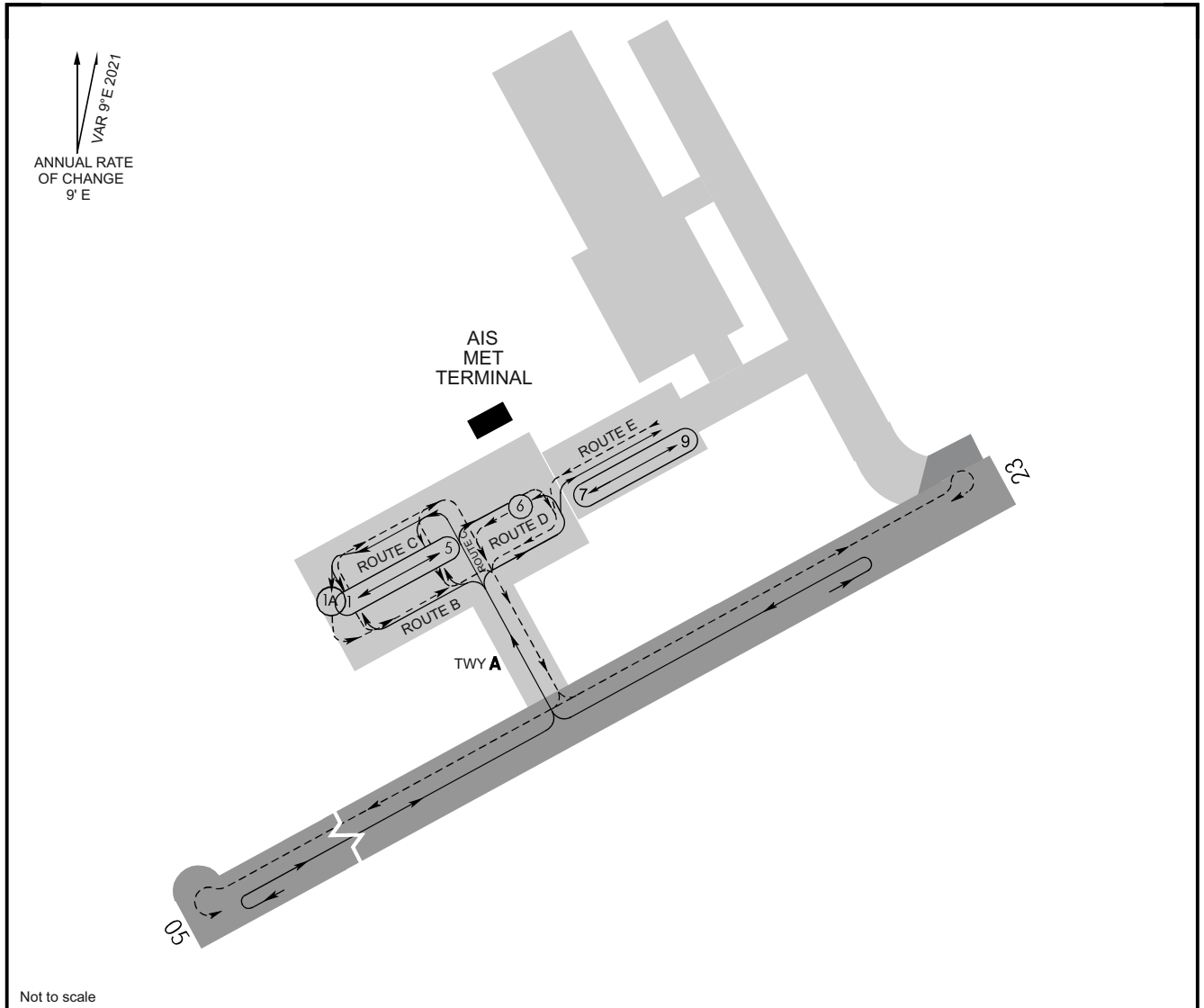


AERODROME GROUND MOVEMENT
AND AIRCRAFT PARKING CHART - ICAO

TOWER (Combined task Aerodrome and
Approach Control Services) **120.400**

VICIEBSK, BELARUS
VICIEBSK



Not to scale

APRON:
Surface CONC+ASPH

STANDS:
Strength: 1, 1A, 2, 3 PCN 62/F/D/X/T ASPH
4, 5 PCN 77/F/D/X/T ASPH
6 PCN 56/R/B/X/T CONC+ASPH
7 - 9 13200kg / 1.0MPa ASPH

TAXIWAY A:
Width 21 m

Surface CONC+ASPH all TWY
Strength PCN 38/R/B/X/T

Dimensions, Strength, view of cover of the ROUTE

ROUTE	Width(m)	Long(m)	Surface	Strength
B	50.5	425.3	ASPH	PCN 62/F/D/X/T
C	50.5	427.8	CONC+ASPH	PCN 56/R/B/X/T
D	50.5	169.2	CONC+ASPH	PCN 56/R/B/X/T
E	28	91.4	ASPH	13200 kg / 1,0 MPa

STAND NR	LATITUDE	LONGITUDE
1	55 07 45.35N	030 21 12.24E
2	55 07 46.22N	030 21 15.14E
3	55 07 47.10N	030 21 18.04E
4	55 07 47.98N	030 21 20.94E
5	55 07 48.85N	030 21 23.84E
6	55 07 51.84N	030 21 26.89E
7	55 07 52.69N	030 21 33.64E
8	55 07 53.01N	030 21 34.70E
9	55 07 53.33N	030 21 35.75E

CHANGE: Magnetic VAR.

THIS PAGE INTENTIONALLY LEFT BLANK